

Is this email not displaying correctly? [View this email in your browser](#)

[PDF Version](#)



May 4, 2021

## HILLSIDE NEWS

- [Ridgeline Protection Ordinance](#)
- [Restore funding for Wildlife Pilot Study](#)
- [Case Reports and Mapping](#)
- [REMINDER: The Hillside Federation Annual Dues](#)



c. 1924 Two early model cars near the intersection of Mulholland Highway (later Drive) and Franklin Canyon.

## NEWS

---

### Ridgeline Protection Ordinance



From Los Angeles City Planning

**The Ridgeline Protection Ordinance** has been prepared in response to Council instruction (CF 11-1441-S1) in order to better protect and preserve the City’s ridgelines, or the natural crests of the mountains that surround and bisect Los Angeles. The proposed ordinance establishes a new Supplemental Use District (SUD) with two levels of protection that are available to be applied to ridgeline or ridgeline adjacent properties.

Today, the draft of the Ridgeline Protection Ordinance has been released for public review and comment. Please note that this ordinance establishes the regulations contained in the Ridgeline Protection SUD but does not propose the application of the SUD anywhere. For more information on what this proposed ordinance does and does not do, please see our **Fact Sheet**. A presentation that provides an overview of the Ridgeline Protection Ordinance is also available **here**.

To submit written comments on the proposed ordinance, please email Patrick Whalen at **patrick.whalen@lacity.org**, and reference case number CPC-2021-3001-CA. The next step in

this ordinance process will be to hold a staff-level public hearing, where members of the public can learn more about the proposed ordinance and submit official testimony to the case file to further inform the ordinance.

To receive future updates regarding this proposed ordinance, please sign up to join the interested parties list on the Department [email signup](#) page.

---

## Restore funding for Wildlife Pilot Study



From Citizens for Los Angeles Wildlife

"For the second year in a row, the mayor cuts something that is relatively low cost with huge dividends for the future of LA. And again, it now becomes time for city councilmembers to be our heroes in the absence of forward-thinking environmental leadership."

-Tony Tucci, CLAW Chair

Speaking at the LA Budget & Finance Committee (April 27, 2021)

**Write to the Budget & Finance Committee to request that they restore funding for the four positions necessary to make the Wildlife Corridor Ordinance a reality.**

Key points you can include are:



- The Wildlife Corridor Ordinance is needed to protect our biodiverse hillsides and maintain the connective habitat that we share with P-22 and all wildlife.
- L.A. can not honestly fight climate change and stand for a Green New Deal while it simultaneously guts environmental planning policy.
- The modest amount of money needed for a Wildlife Corridor Ordinance is a drop in the bucket against the long-term devastation that just one new building project can have on the hillsides.
- The plan protects our hillsides which are the city's largest filter for carbon sequestration.
- The plan prevents catastrophic wildfires by creating better buffer zones in the hillsides.

**If you represent an organization, we request you join in CLAW's rally to reinstate funding for this environmental program. Please enter your organization letter to the council file to [LACouncilComment.com](https://LACouncilComment.com) (CF-21-0600). Please do this ASAP.**

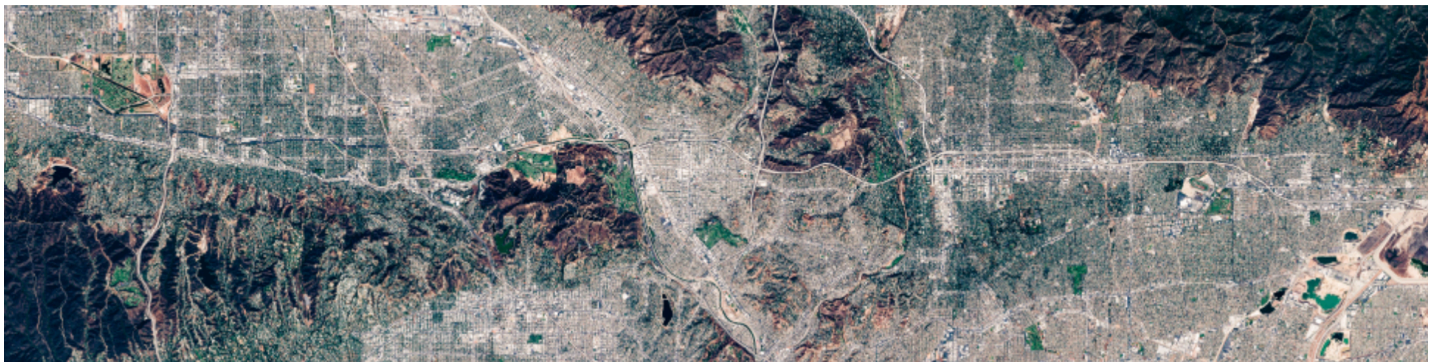
City Planning announced updated resources for the Wildlife Pilot Study, including a [new webpage](#) and [informational video](#). This update also highlights the release of the [Draft Wildlife Ordinance](#) for public review and feedback.

The new webpage includes an updated project summary and timeline, more details on the regulations that are proposed in the draft ordinance, a new informational video providing background information and explanation of the proposed regulations, as well as additional resources and ways to engage with the project!

View the [Fact Sheet](#), and the [Draft Ordinance](#).

---

## Case Reports and Mapping



From Los Angeles City Planning

[Cases Filed and Cases Completed Maps](#)

Los Angeles City Planning now provides regular reports on case filings and completed cases to [neighborhood councils](#) and interested community members. These cases include all [discretionary](#) planning applications that City Planning reviews. The reports provide helpful information, such as a project's description, address, and applicant information. As an additional feature, these reports hyperlink each case number to the Department's Planning Document Information System (PDIS) where case summary information and electronic documents may be accessed.

The maps identify the physical location of these projects, in an effort to keep communities informed about what has been proposed and approved in their neighborhood. Consult City Planning's web-based mapping application, [Zoning Information and Map Access System \(ZIMAS\)](#), for a detailed look at the types of planning entitlements previously filed for any property in the City of Los Angeles.

Sign up [here](#) to begin receiving these reports.



Recent  
Case Filings



Bi-Weekly  
Case Filings



Weekly  
Completed  
Cases



Prefix &  
Suffix Report

---

## REMINDER: The Hillside Federation Annual Dues



**Payment for the Hillside Federation 2021 Member Dues are now past due.  
The 2021 dues are \$150.00**

Payment can be made online at [HillsideFederation.org](https://www.HillsideFederation.org) using the PAY NOW button under Annual Membership Dues or by making a check payable to the Hillside Federation and mailing it to:

Don Andres, HF Treasurer  
7470 Franklin Avenue  
Los Angeles, CA 90046-2242

If you have any questions, please contact Don Andres: 323-333-7445 or

[treasurer@hillsidefederation.org](mailto:treasurer@hillsidefederation.org)

---

## ABOUT THE HILLSIDE FEDERATION

---

The Hillside Federation is a public benefit non-profit 501(c)(3) organization *founded in 1952*. Our mission is to protect the property and the quality of life of the residents of the Santa Monica Mountains and other hillside areas of Los Angeles and its environs, and to encourage and promote those policies and programs which will best preserve the natural topography and wildlife of the mountains and hillsides for the benefit of all the people of Los Angeles.

### Organizations

Argyle Civic Association  
Beachwood Canyon NA  
Bel Air Association  
Bel Air Hills Association  
Bel Air Knolls Property Owners  
Bel Air Skycrest POA  
Benedict Canyon Association  
Brentwood Hills HOA  
Brentwood Residents Coalition  
Cahuenga Pass POA  
Canyon Back Alliance  
Crests Neighborhood  
Dixie Canyon Association  
Doheny/Sunset Plaza NA  
Franklin Hills Residents Association  
Franklin/Hollywood West Residents Assn  
Highlands Owners Assn  
Hollywood Dell Civic Association  
Hollywood Heights Association  
Hollywoodland Homeowners  
Holmby Hills HOA  
Kagel Canyon Civic

Lake Hollywood Homeowners  
Laurel Canyon Association  
Los Feliz Improvement Association  
Mt. Olympus Property Owners  
Mt. Washington Homeowners Alliance  
Nichols Canyon NA  
North Beverly Drive/Franklin Canyon  
Oak Forest Canyon Homeowners  
Oaks Homeowners  
Outpost Estates Homeowners  
Pacific Palisades Residents Assn  
Residents of Beverly Glen  
Save Coldwater Canyon!  
Save Our Canyon  
Shadow Hills Property Owners  
Sherman Oaks Homeowners Association  
Silver Lake Heritage Trust  
Studio City Residents Association  
Sunset Hills Homeowners  
Tarzana Property Owners  
Torreyson-Flynn Association  
Upper Mandeville Canyon Association  
Upper Nichols Canyon NA  
Whitley Heights Civic Association

### Bring an Issue to the Federation

If your organization would like to bring an issue to the attention of the Federation, please

complete a [Request for Action form](#) and send it to [RFA@hillsidefederation.org](mailto:RFA@hillsidefederation.org) along with supporting documents no later than 10 days prior to the meeting. This will help you organize your presentation while providing the necessary information to allow the Federation to consider your organization's request.

## SUPPORT US

---

**We're fighting to protect the Santa Monica Mountains, hillside areas of Los Angeles and its environs and we can't do it without you.** In order to do the important work we do, we rely entirely on support from people like you!



### **Jerry Daniel Memorial Fund**

In honor of his great achievements, the Hillside Federation has established the Jerry Daniel Memorial Fund to provide resources to help maintain and improve the Jerry Daniel Overlook on Mulholland Drive above the Hollywood Bowl, as well as resources for other environmentally sensitive efforts in his memory.



### **Stop the Hollywood Center Fund**

Organizations or individuals can make a donation to the Federation (designated to Stop the Hollywood Center). These funds will be used for legal costs to fight the proposed project.

Please support the Hillside Federation's mission and DONATE today!

**DONATE**

---

**Our mailing address is:**

Hillside Federation  
P.O. Box 27404  
Los Angeles, CA 90027

[HillsideFederation.org](https://HillsideFederation.org)

Want to change how you receive these emails?

You can [update your preferences](#) or [unsubscribe from this list](#).

© 2021 The Federation of Hillside and Canyon Associations, Inc. All rights reserved.



Share

---

This email was sent to [chairman@hillsidefederation.org](mailto:chairman@hillsidefederation.org)  
[why did I get this?](#) [unsubscribe from this list](#) [update subscription preferences](#)  
Hillside Federation · PO Box 27404 · Los Angeles, CA 90027-0404 · USA

